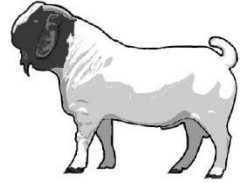


Eastern Panhandle Goat and Lamb



Jackpot Show

Show is open to anyone with livestock projects in a youth development program,
regardless of residence

There will be no discrepancies on short or long docked lambs

Saturday June 14, 2008

Entries close June 11, 2008—Late entries will be accepted after this date

Jefferson County Fairgrounds on Leetown Pike (Secondary Rt 15) 3 miles west of Charles Town, WV

Arrival: 8AM-9AM

Scales open at: 9AM

Goat Show to start at 11AM

Lamb Show to start no earlier than 2PM

Judge: Matt Trostle, PA

Champions \$250; Reserve Champions \$100

Best WV Bred and Owned \$50

Rules:

1. Lambs and Goats must be tagged with your county/state fair tags
2. Animals must be owned by the exhibitor and must be under 1 year of age
3. Exhibitors are limited to 2 animals of each species
4. Goats must either be tipped or dehorned
5. Out of state entries must be accompanied by an Official CVI from their veterinarian
6. Entry fee of \$10 per head must accompany each entry form (\$15.00 per head for late entries)
7. Scales will open at 9AM and close at 10:30
8. Fitting and Showing is a **REQUIRED** class, if you do not show in this class you are ineligible to compete in the Jackpot class.
9. Exhibitors are responsible for providing their own bedding and cleaning their pens before leaving the grounds.

Fitting and Showing Classes:

- Novice Fitting and Showing
- Junior Fitting and Showing
- Senior Fitting and Showing

Jackpot Classes:

- Light
- Medium-Light
- Medium
- Medium-heavy
- Heavy

The weight class you are in will be determined the day of the show after weigh in, large classes may be split